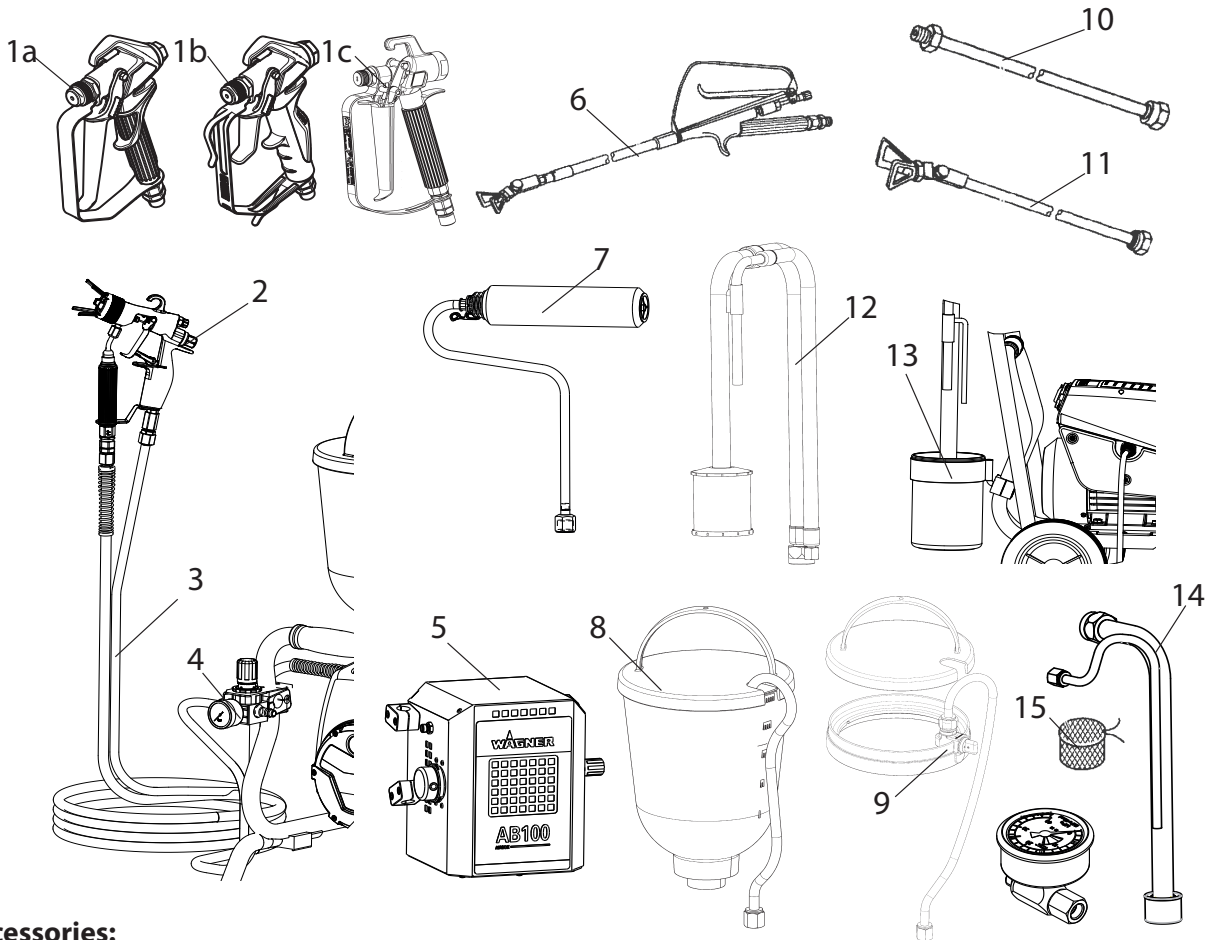


# 11 SPARE PARTS AND ACCESSORIES

## 11.1 SUPER FINISH 23 PLUS ACCESSORIES



**Accessories:**

| ITEM | DESIGNATION  | ORDER NO.            |
|------|--|----------------------|
| 1a   | Spray gun Vector Pro (2-finger)<br>Spritzpistole Vector Pro (4 Finger) | 0538 041<br>0538 040 |
| 1b   | Spray gun Vector Pro (2-finger and 4-finger)                           | 0538 043             |
| 1c   | Spray gun AG-14 (stainless steel)                                      | 0502081A             |
| 2    | AirCoat spray gun AC 4500 (blue)                                       | 2368 269             |
| 3    | Double hose  | 9984 564             |
|      | HP hose DN-3, 7.5 m  | 9984 583             |
| 4    | AirCoat-controller set   | 0340 250             |
| 5    | AirBoost: Compressor for AirCoat                                       | 2347 935             |
| 6    | Pole gun<br>Length 120cm; G thread 7/8"<br>Length 200cm; G thread 7/8" | 0296 441<br>0296 442 |
| 7    | Inner-Feed Roller  | 2418370              |
| 8    | Hopper 5l  | 0341 265             |
| 9    | Hopper cleaning ring (TopClean)  | 0340 930             |

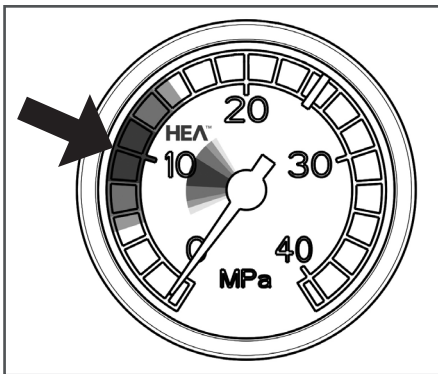
| ITEM. | DESIGNATION   | ORDER NO.                                |
|-------|---|--|
| 10    | Tip extension<br>Length 12.5 cm<br>Length 20 cm<br>Length 50 cm<br>Length 75 cm         | 2418853<br>2418854<br>2418855<br>2418856 |
| 11    | Tip extension with<br>Slewable knee joint<br>Length 90 cm<br>Length 180 cm              | 2418862<br>2418863                       |
| 12    | Suction system (flexible)<br>for dispersionen   | 0034 630                                 |
| 13    | Cleaning container for suction system<br>with holder (only for flexible suction system) | 2343 481                                 |
| 14    | Suction system (rigid) for dispersions  | 2342 879                                 |
| 15    | Filter bag, mesh width 0,3 mm   | 0097 531                                 |
| 16    | Pressure gauge (HEA)  | 2383 995                                 |



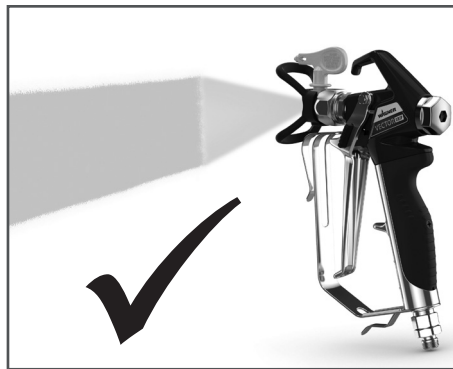
## HEA NOZZLES FOR LOW-MIST SPRAYING AT LOW PRESSURE

HEA stands for High Efficiency Airless, an innovative nozzle technology revolutionising airless spraying. HEA nozzles allow the pressure of the spray device to be reduced right down and allow it to work in the low-pressure range (ideally at 80 - 140 bar). The nozzles can be used with all TradeTip 3 nozzle holders and WAGNER devices.

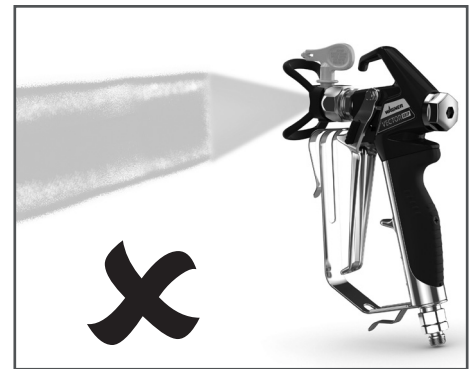
Some paints may need to be diluted to achieve the best result possible. The experts at Wagner application technology have therefore tested a wide range of materials for you. Their recommendations can be found in the Wagner Spray Guide at [sprayguide.wagner-group.com](http://sprayguide.wagner-group.com).



Set the low pressure in the HEA range and start.



Even spray pattern without spray edges.



If edges are visible, slowly increase the pressure.

### HEA tip table



All of the tips in the table below are supplied together with the appropriate gun filter.

| Application   | Tip marking | Spray angle | Bore inch / mm | Spraying width mm 1) | Gun filter | Order no. |
|---|-------------|-------------|----------------|----------------------|------------|-----------|
| Synthetic-resin paints<br>PVC paints                  | 211         | 20°         | 0.011 / 0.28   | 120                  | red        | 0554211   |
|   | 311         | 30°         | 0.011 / 0.28   | 150                  | red        | 0554311   |
|   | 411         | 40°         | 0.011 / 0.28   | 190                  | Rot        | 0554411   |
| Paints, primers<br>Fillers                            | 213         | 20°         | 0.013 / 0.33   | 120                  | red        | 0554213   |
|   | 313         | 30°         | 0.013 / 0.33   | 150                  | red        | 0554313   |
|   | 413         | 40°         | 0.013 / 0.33   | 190                  | red        | 0554413   |
| Fillers<br>Rust protection paints                     | 415         | 40°         | 0.015 / 0.38   | 190                  | yellow     | 0554415   |
|   | 515         | 50°         | 0.015 / 0.38   | 225                  | yellow     | 0554515   |
|   | 615         | 60°         | 0.015 / 0.38   | 270                  | yellow     | 0554615   |
| Rust protection paints<br>Latex paints<br>Dispersions | 417         | 40°         | 0.017 / 0.43   | 190                  | white      | 0554417   |
|   | 517         | 50°         | 0.017 / 0.43   | 225                  | white      | 0554517   |
|   | 617         | 60°         | 0.017 / 0.43   | 270                  | white      | 0554617   |
| Rust protection paints<br>Latex paints<br>Dispersions | 519         | 50°         | 0.019 / 0.48   | 225                  | white      | 0554519   |
|   | 619         | 60°         | 0.019 / 0.48   | 270                  | white      | 0554619   |
| Flame retardant                                       | 421         | 40°         | 0.021 / 0.53   | 190                  | white      | 0554421   |
|   | 521         | 50°         | 0.021 / 0.53   | 225                  | white      | 0554521   |
|   | 621         | 60°         | 0.021 / 0.53   | 270                  | white      | 0554621   |

1) Spray width at about 30 cm to the object and 100 bar (10 MPa) pressure with synthetic-resin paint 20 DIN seconds.

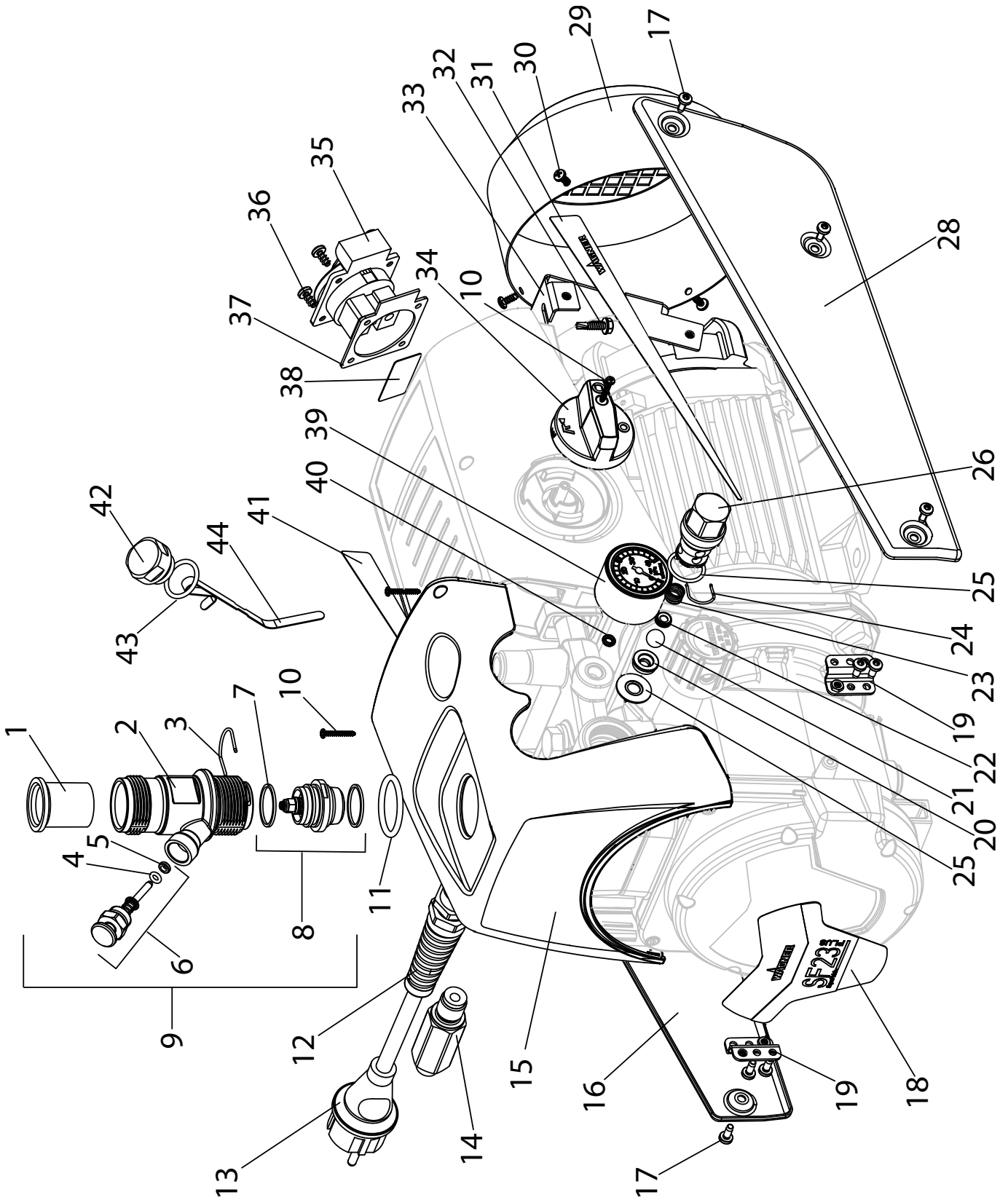


You can find further accessories for optimised working at <https://go.wagner-group.com/accessories-professional>

## 11.2 SPARE PARTS LIST SF 23 PLUS

| ITEM | ORDER-NO | DESIGNATION  |
|------|----------|--|
| 1    | 0340 339 | Inlet  |
| 2    | 2334 383 | Inlet valve trigger housing                            |
| 3    | 2369 455 | Clasp  |
| 4    | 9971 486 | O-ring   |
| 5    | 0341 316 | Wiper  |
| 6    | 0341 336 | Inlet valve trigger (incl. pos. 4, 5)                  |
| 7    | 0341 331 | Sealing ring   |
| 8    | 2393 043 | Inlet valve (incl. pos.7 (2x))                         |
| 9    | 2402 347 | Inlet valve complete. (pos. 1,2,3,6,8)                 |
| 10   | 0421 328 | Oval head screw 3, 17x20                               |
| 11   | 2337 138 | O-ring 31.4 x 3.55                                     |
| 12   | 9952 685 | Cable threaded joint                                   |
| 13   | 0261 352 | Mains cable<br>H07-RNF 3x 1.5mm <sup>2</sup> , 6m long |
| 14   | 2409 463 | Double socket NPS 1/4"                                 |
| 15   | 2334 038 | Cover  |
| 16   | 2436 070 | Cover (right)  |
| 17   | 2315 382 | Oval head screw M4x10                                  |
| 18   | 2339 570 | Label SF 23 PLUS                                       |
| 19   | 2437 157 | Sheet metal bracket assy.                              |
| 20   | 0341 327 | Outlet valve seat                                      |
| 21   | 9941 501 | Ball 10  |
| 22   | 0253 405 | Spring support ring                                    |
| 23   | 0341 326 | Pressure spring  |
| 24   | 0341 328 | Clasp  |
| 25   | 2393 105 | Sealing ring and o-ring 20x2                           |
|      | 2393 106 | Outlet valve, service set (pos. 20-25)                 |
| 26   | 2369 445 | Outlet valve complete (incl. pos.20-25)                |
| 28   | 2436 068 | Cover (left)   |
| 29   | 2369 506 | Fan cover  |
| 30   | 9902 225 | Oval head screw 3.5x9.5                                |
| 31   | 2341 466 | Label (left)   |
| 32   | 9903 348 | Self drilling screw                                    |
| 33   | 2337 484 | Connecting plate                                       |
| 34   | 2342 501 | Multi-function switch                                  |
| 35   | 9950 241 | Socket   |
| 36   | 9905 113 | Oval head screw 5x10                                   |

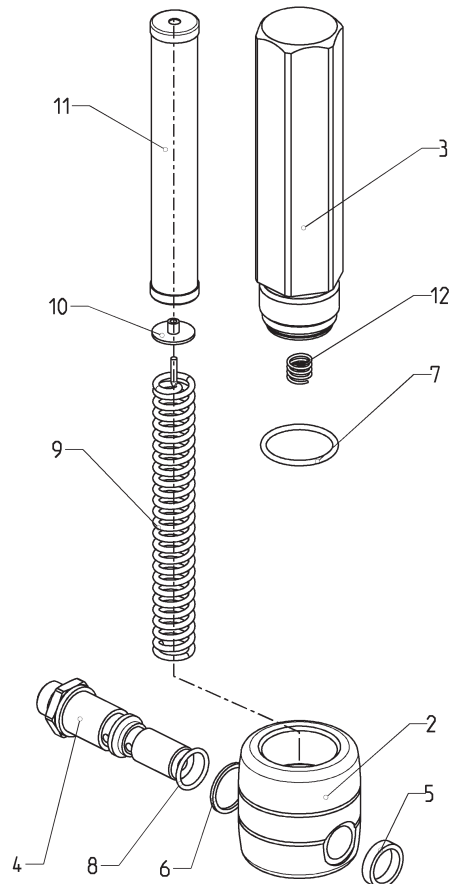
| ITEM | ORDER-NO | DESIGNATION         |
|------|----------|---------------------|
| 37   | 9950 242 | Seal                |
| 38   | 2342 535 | Label               |
| 39   | 2343 666 | Pressure gauge      |
| 40   | 9970 218 | Sealing ring        |
| 41   | 2341 465 | Label (right)       |
| 42   | 0341 349 | Oil cap screw       |
| 43   | 9971 146 | O-ring              |
| 44   | 2362 313 | Oil measuring stick |



Spare parts diagram SF 23 PLUS

**11.3 SPARE PARTS LIST HIGH-PRESSURE FILTER**

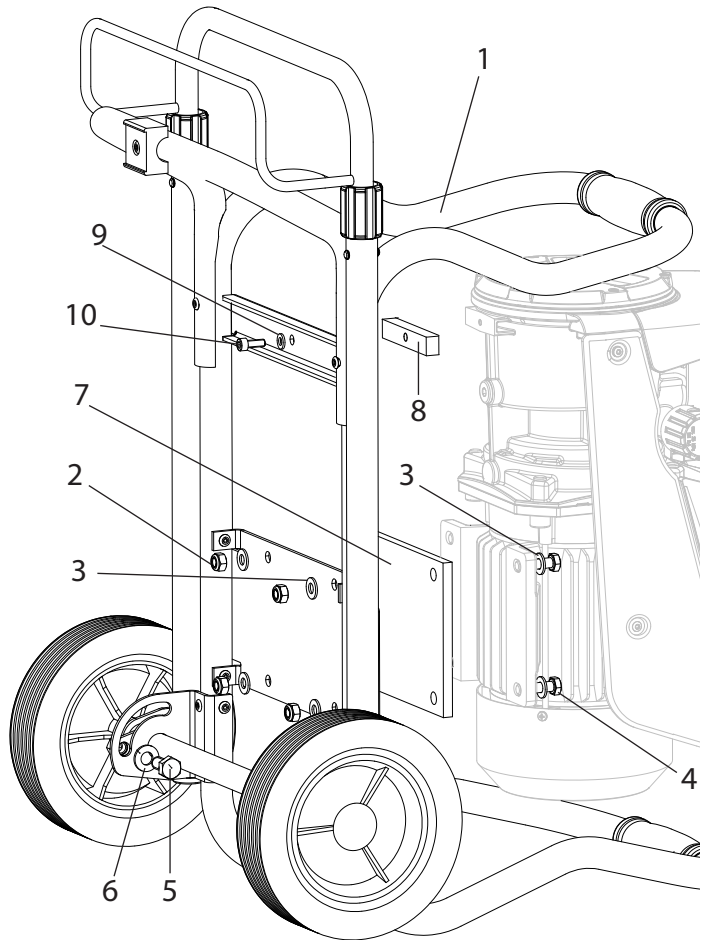
| ITEM | ORDER NO. | DESIGNATION                           |
|------|-----------|---------------------------------------|
| 1    | 0097 121  | High-pressure filter HF- 01 compl.    |
| 2    | 0097 301  | Filter block                          |
| 3    | 0097 302  | Filter housing                        |
| 4    | 0097 303  | Hollow screw                          |
| 5    | 0097 304  | Seal ring                             |
| 6    | 9970 110  | Seal ring                             |
| 7    | 9974 027  | O-ring 30x2 (PTFE)                    |
| 8    | 9971 401  | O-ring 16x2 (PTFE)                    |
| 9    | 0508 749  | Bearing spring                        |
| 10   | 0508 603  | Bearing ring                          |
| 11   | 0508 748  | Filter insert 60 meshes               |
|      | 0508 450  | Optional:<br>Filter insert 100 meshes |
|      | 0508 449  | Filter insert 30 meshes               |
| 12   | 9994 245  | Pressure spring                       |



**Spare parts diagram high-pressure filter**

**11.4 SPARE PARTS LIST TROLLEY**

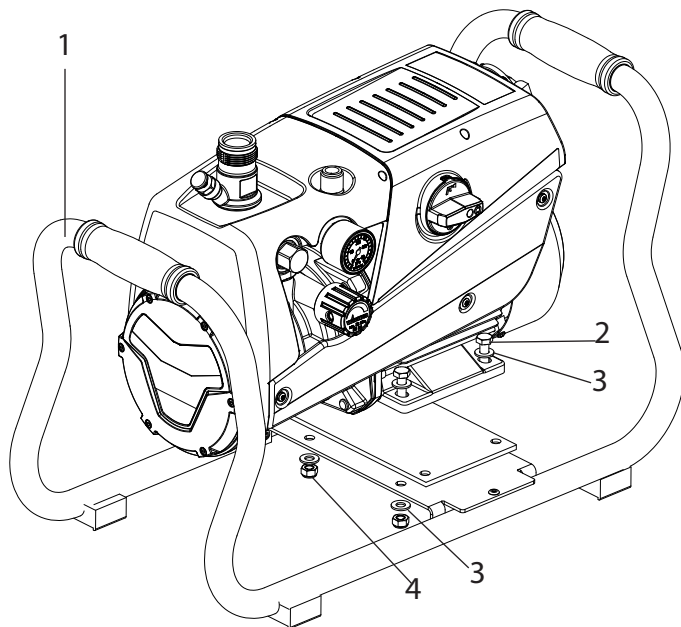
| ITEM | ORDER NO. | DESIGNATION                |
|------|-----------|----------------------------|
| 1    | 2343 670  | Trolley assy. (SF 23 PLUS) |
| 2    | 9910 208  | Hexagon nut M8             |
| 3    | 9920 102  | Washer A 8.4               |
| 4    | 9900 118  | Hexagon screw M8x30        |
| 5    | 3054 019  | Hexagon screw M10x20       |
| 6    | 9920 106  | Washer A 10.5              |
| 7    | 2340 954  | Intermediate plate         |
| 8    | 2362 484  | Absorber                   |
| 9    | 9920 311  | Washer A 6,4               |
| 10   | 9900 325  | Hexagon screw M6x16        |



**Spare parts diagram trolley SF 23 PLUS**

## 11.5 SPARE PARTS LIST FRAME

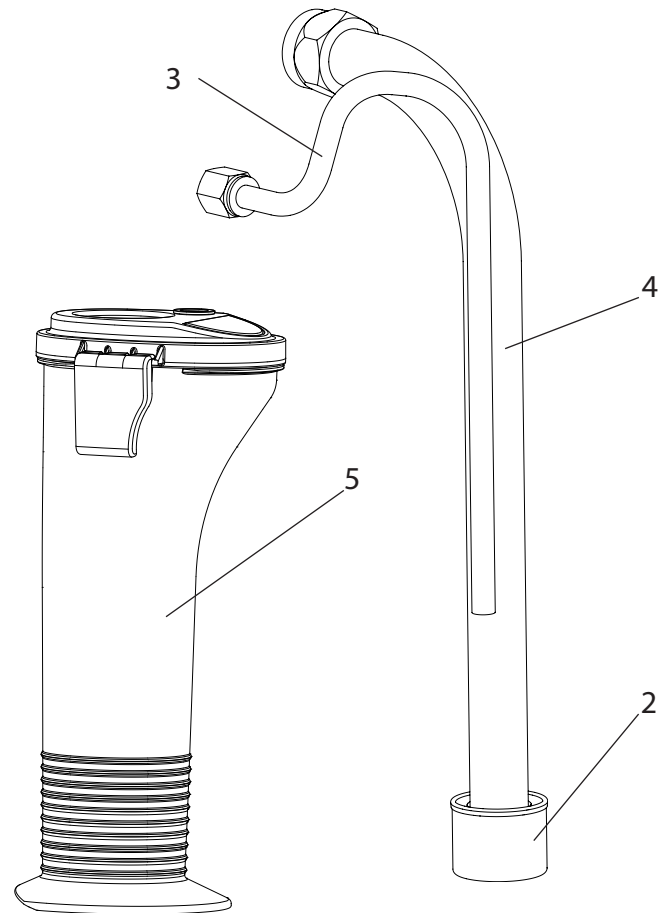
| ITEM | ORDER NO. | DESIGNATION         |
|------|-----------|---------------------|
| 1    | 2343 637  | Frame complete      |
| 2    | 9900 118  | Hexagon screw M8x30 |
| 3    | 9920 102  | Washer A 8.4        |
| 4    | 9910 208  | Hexagon nut M8      |



Spare parts diagram frame

## 11.6 SPARE PARTS LIST SUCTION SYSTEM (RIGID)

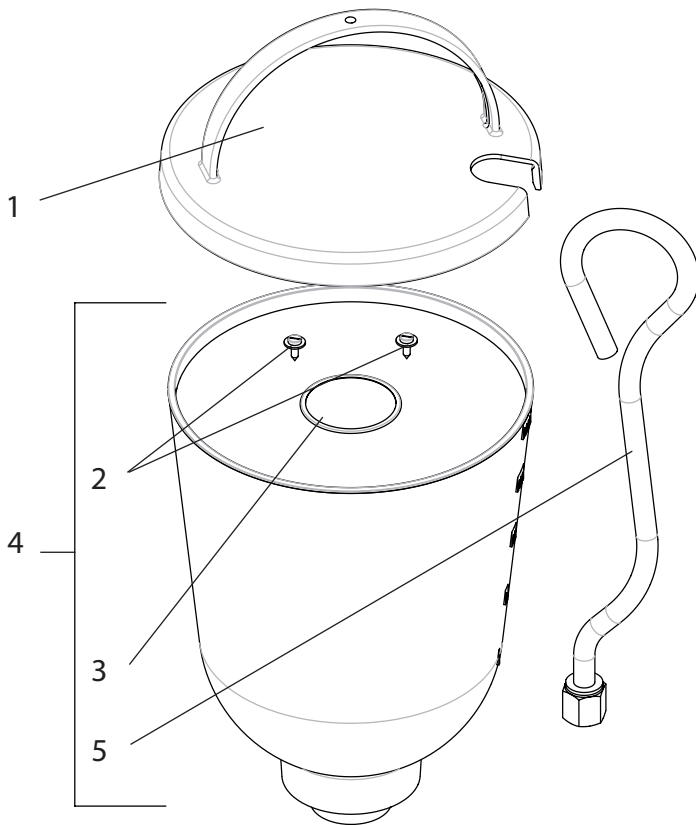
| ITEM | ORDER NO. | DESIGNATION                            |
|------|-----------|--|
| 1    | 2342 879  | Suction system assy. (incl. pos. 2-4)  |
| 2    | 2323 325  | Filter, mesh width 1 mm                |
|      | 0250 245  | Optional:<br>Filter, mesh width 0,8 mm |
| 3    | 2343 688  | Return pipe                            |
| 4    | 2342 682  | Suction tube                           |
| 5    | 2306 987  | PumpRunner                             |



Spare parts diagram suction system (rigid)

**11.7 SPARE PARTS LIST HOPPER 5L**

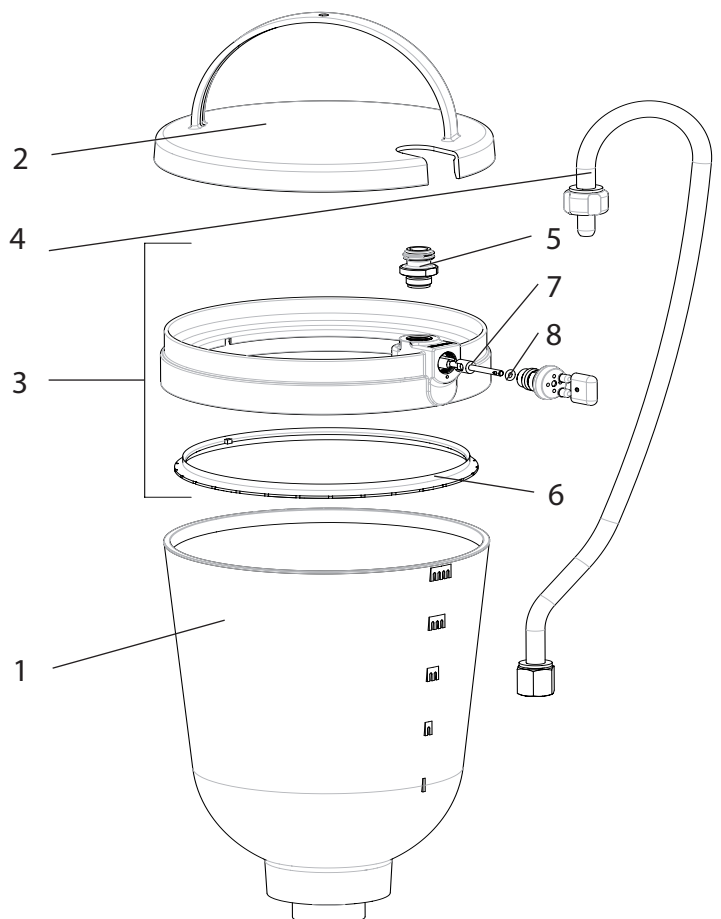
| ITEM | ORDER-NO | DESIGNATION                                 |
|------|----------|---|
| -    | 0341 265 | Hopper 5l, assy.                            |
| 1    | 0340 901 | Cover                                       |
| 2    | 9902 306 | Sheet metal screw 3,9x13 (2)                |
| 3    | 0037 607 | Filter disk, mesh width 0,8 mm              |
|      | 0003 756 | Optional:<br>Filter disk, mesh width 0,4 mm |
| 4    | 0340 904 | Hopper                                      |
| 5    | 0340 908 | Return pipe                                 |



**Spare parts diagram hopper**

**11.8 SPARE PARTS LIST HOPPER WITH TOPCLEAN**

| ITEM | ORDER-NO | DESIGNATION                      |
|------|----------|----------------------------------|
| -    | 0341 268 | Hopper 5l with TopClean, assy.   |
| 1    | 0340 904 | Hopper 5l (filter disc see 11.7) |
| 2    | 0340 901 | Cover                            |
| 3    | 0340 271 | TopClean, assy.                  |
| 4    | 0340 270 | Return pipe                      |
| 5    | 0340 499 | Screwing                         |
| 6    | 0340 466 | Distributor ring                 |
| 7    | 0340 500 | Rotary valve shaft               |
| 8    | 9971 486 | O-ring 4x2 (FFPM)                |



**Spare parts diagram hopper with TopClean**